



Proline Wall 129 Series Range Hoods

INCLUDES:

**PLFW 129E / 129J, PLJW 129 / 129RK
PLGW 129SC & PLJW 130**

INSTALL MANUAL

Table of Contents

Safety Information	2
Warranty Information and Return Policy	3
Pre-installation	4
129 Series Wall Hood Installation	6
Final Steps	8
Maintenance	8
Latest Installation Manual	8

Safety Information

Ask a qualified professional such as a licensed general contractor to install your range hood. Electrical wiring must be installed, insulated, and grounded by a licensed electrician familiar with your local codes and regulations. If you don't have this background, do not install the hood yourself. Poor installation or electrical work may result in an injury.

- Range hoods can be heavy to mount, so always ask a friend for help.
- Wear protective gloves when handling the range hood and its filters. The edges can be sharp.
- For residential use only. Do not install your hood in a restaurant or other commercial environment. Our hoods do not abide by the rules and regulations for commercial use.
- Do not use your hood to vent hazardous or explosive materials and vapors. This is incredibly dangerous and may result in serious injury.
- When cleaning the unit, make sure the power is turned off.
- When troubleshooting or replacing the touch panel, circuit board, or other electrical components, turn power to the range hood off.
- Check your local codes and regulations to see what type of ductwork is required. Some codes require rigid metal ductwork. Do not use flex duct for your range hood, as it can wear down quickly. Air may escape into your walls or attic.
- Never vent your ducted hood into an attic, joists in your ceiling, or a soffit. Always vent the hood to the outside to keep grease, smoke, and unwanted contaminants out of your home.
- Avoid electrical wiring when drilling a hole into your wall or ceiling for ductwork.
- Clean or replace old ductwork with new rigid ductwork to prevent potential grease fires and increase the efficiency of your range hood.
- Seal all joints in your duct system with aluminum tape to prevent air from escaping in your walls or attic.
- Check your local regulations to determine if you need make-up air. When a range hood vents air out of your home, that air has to be replaced. If you operate a powerful range hood (600+ CFM) in a small kitchen, you may need makeup air. We do not sell makeup air kits.
- Clean your range hood filters, grease trays, and the range hood every few weeks. Heavy grease buildup shortens the life of your hood and it may lead to a grease fire.
- All Proline range hoods are ETL certified. They meet all industry standards and regulations to ensure your safety.
- Use the high setting on your range hood to vent heavy smoke or heat in case of emergency. Otherwise, use the lower settings to prolong the life of your hood.
- While your range hood is on, do not leave your cooking area unattended.

Safety Information (continued)

- When cooking with oils, do not heat them past their smoke point. If oil starts smoking, turn off the burner and discard any food that came into contact with it. Do not use Extra Virgin Olive Oil in high heat, since it starts to smoke at around 300° Fahrenheit.

In the event of a grease fire:

- Smother the flames with a large lid, pan, or baking sheet. If the fire is small, smother it with baking soda or salt. For larger fires, use a fire extinguisher.
- Turn off all burners.

- Do not touch a flaming pan. This may result in serious burns.
- Keep all flammable materials away from the grease fire. This may include nail polish remover, flour, rubbing alcohol, and hand sanitizer, among other household items.
- Do not pour water on a grease fire. Water will spread the oil around, making the fire more potent and dangerous. Wet towels and rags will also spread the oil, so avoid using these as well.
- If you cannot contain the fire, call the fire department immediately.

Warranty Information and Return Policy

Proline 3-Year Warranty

All of our range hoods have a three-year warranty. For the first year, we cover parts and labor. This doesn't include installation. For the second and third years of your warranty, we'll cover parts only. This warranty covers every part of your range hood except the following:

- Range hood filters
- Range hood lights
- Any dents, dings, scratches, or other damage to the outside of the hood

If you're outside of the warranty and your hood is not working properly, call us at 801-973-3959 and we'll help you resolve your issue. We can typically help fix your Proline range hood at a reasonable price so you don't have to replace the whole thing.

Proline Return Policy

The return policy shown on this website is Proline's official policy. Printed materials that may arrive with your product could contain outdated or incorrect information. Please rely on this website for the most accurate details.

We want you to be completely satisfied with your purchase. Please read the following carefully before installation or discarding packaging:

1. Damaged or Defective? Let Us Know Within 5 Days

If your hood arrives damaged or defective, you must notify us within 5 business days of delivery. We'll work with you to repair, replace, or fully refund the item at no cost to you. Claims made after 5 business days will not be accepted.

2. Changed Your Mind? Return Window Up to 30 Days

If your hood is not damaged but you still want to return it, you may request a return within 30 days of delivery. If your return is approved, a 20% restocking fee will apply.

3. No Returns After 30 Days

We do not accept returns under any circumstance beyond 30 days from delivery.

4. Installed Products Cannot Be Returned

Items that have been installed or show any signs of installation are not eligible for return.

5. Keep the Packaging

All returns must include the original packaging. If any part of the packaging is missing or discarded, the return will be denied.

6. Photo Documentation Required

To process a return request, photo documentation is required:

- If the box has been **opened**, you must provide **6 clear photos** showing all sides of the range hood, including the top and bottom, *outside* of the packaging.
- If the box is **unopened**, please provide **photos showing the factory seal on the tape has not been broken**.

CHIMNEYS AND CHIMNEY EXTENSIONS ARE NOT RETURNABLE.

Ensure the product is uninstalled, repackaged in the original box with all accessories, and in new condition.

Pre-Installation

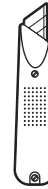
Tools Required



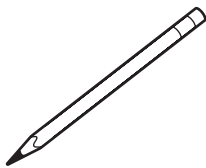
Safety Goggles



Safety Gloves



Utility Knife



Pencil



Tape



Adjustable Wrench



Phillips Screwdriver



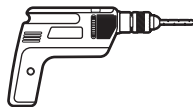
Flathead Screwdriver



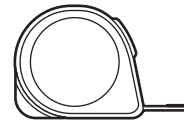
Needle Nose Pliers



Hammer



Electric Drill



Measuring Tape











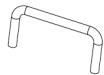


Level

Model Notes and Key Differences

MODEL	FILTER TYPE	GREASE TRAY	BLOWER	DUCT SIZE	MOUNTING	RECIRC
PLJW 129	Baffle w/ latches	No	900 or 1200 CFM	6" or 8"	EZ Hang Bracket	No
PLJW 129RK	Charcoal filters (for recirculating)	No	600 CFM	6"	EZ Hang Bracket	Yes
PLFW 129E & 129J	Baffle filters w/ handles	Yes	900 CFM	6"	One-piece Wall Bracket	No
PLGW 129SC	Baffle w/ latches	No	900 or 1200 CFM	6" or 8"	EZ Hang Bracket	No
PLJW 130	Baffle filters w/ handles	Yes	900 or 1200 CFM	6" or 8"	EZ Hang Bracket	No

Pre-Installation (continued)

Parts Supplied

DESCRIPTION	IMAGE	QUANTITY
Wall Hood		1
EZ Hang & Standard Wall Bracket Screws 4 x 25 mm (to secure bracket to wall)		Varies
EZ Hang & Standard Wall Mount Bracket Machine Screws 4 x 12 mm (to secure bracket to hood)		Varies
Round Head Screws for Ducting Transition Piece		Varies
Ducting Transition Piece (except for PLJW 129RK)		1
EZ Hang Wall Mount Brackets (PLJW & PLGW, two pieces) or Mounting Wall Bracket (PLFW)		1
Baffle Filter Spacer		Varies by size
Baffle or Mesh Filters		Varies by size
Baffle Filter Handles (if baffle filters included)		Varies by size
Baffle Filter Handle Screws (if baffle filters included)		Varies by size
Grease Tray (if hood includes grease tray)		1

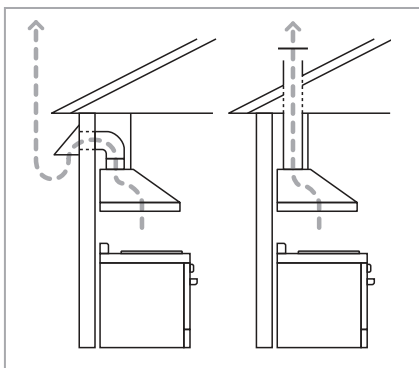
129 Series Wall Hood Installation

Before you begin, plug in the hood and test the blowers and lights to make sure everything works properly before installation.

Before You Begin

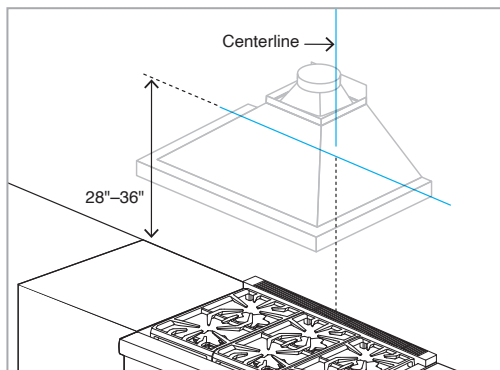
- ☐ Decide if your hood will vent through the wall or ceiling.

Note: the PLJW 129RK can also operate in recirculating mode — no ducting required.



Step 1: Mark the Mounting Location

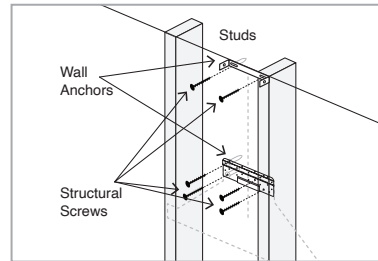
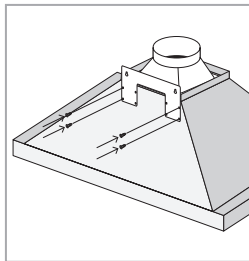
- ☐ Mark the centerline of your cooktop on the wall.
- ☐ Measure 28"–36" above the cooking surface and mark the mounting height.
- ☐ Use a stud finder to locate wall studs. Mark their positions clearly.



Step 2: Install the Wall Bracket

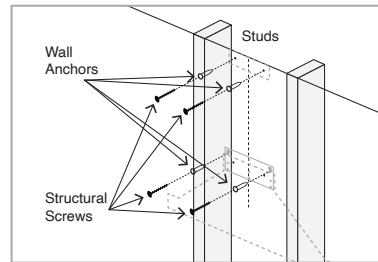
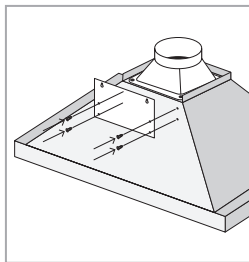
For PLJW 129, 129RK & PLGW 129SC Models (EZ Hang Bracket):

- ☐ Position the bracket level and centered on the wall.
- ☐ Secure it into at least one wall stud. Use wall anchors only for secondary points.



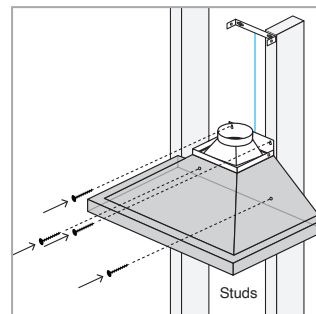
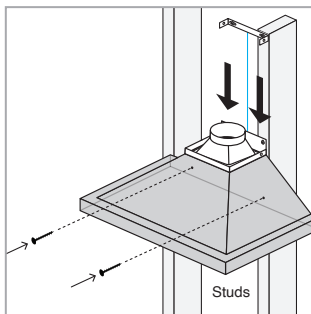
For PLFW 129E & 129J Models (Single-Piece Bracket):

- ☐ Attach the bracket directly to the back of the hood.
- ☐ Mount the hood flush to the wall.
- ☐ For additional support, drive screws through the back of the hood into wall studs or blocking.



Step 3: Mount the Hood

- ☐ With the help of another person, lift the hood into place.
- ☐ For EZ Hang systems, clip the hood onto the wall bracket.
- ☐ For PLFW models, align the hood and secure it directly to the wall

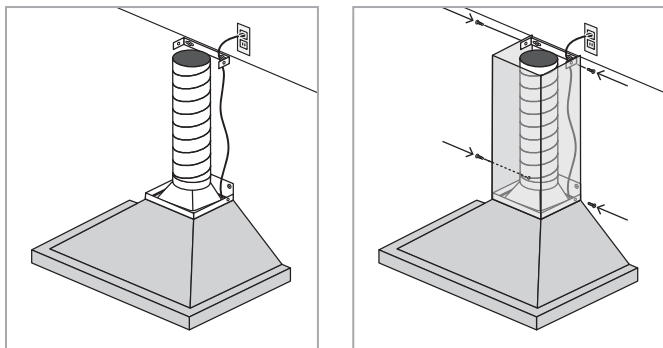


Step 4: Install Ducting and Chimney Covers

- ☐ Connect the ductwork to the top of the hood.
- Use foil tape or clamps to seal all joints tightly.*
- ☐ Slide the lower chimney cover down over the hood.
- ☐ Install the upper chimney bracket on the wall.

Bracket style varies between PLJW and PLFW models.

- ☐ Set the chimney on top of the hood, pull the inner chimney up and tape it in place, secure it with the supplied screws, then slide the upper chimney up and fasten it to the bracket.

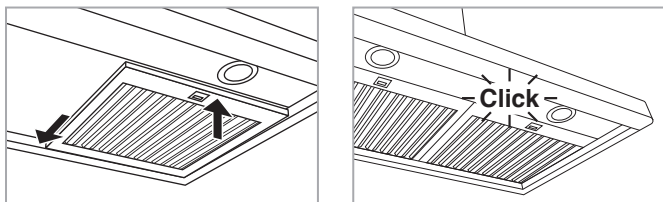


Step 5: Install Filters

WARNING: Baffle filter edges and channels may be sharp. Use caution when installing or removing, and do not disassemble filters to avoid injury.

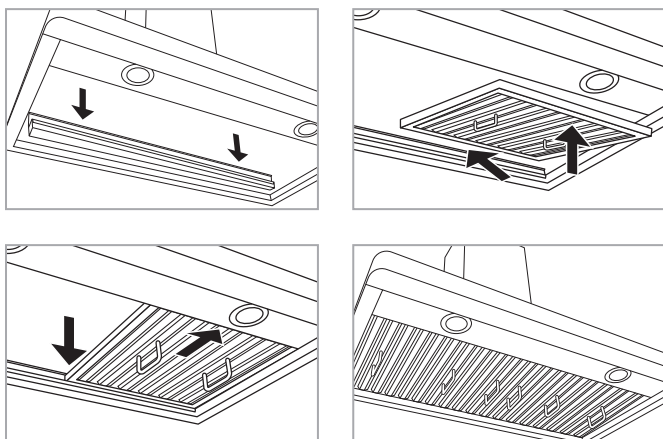
PLJW 129 / 129RK / PLGW 129SC (Latch Baffle Filters):

- ☐ Insert the rear edge of the filter into the back channel.
- ☐ Push the front of the filter upward until it latches with a click.



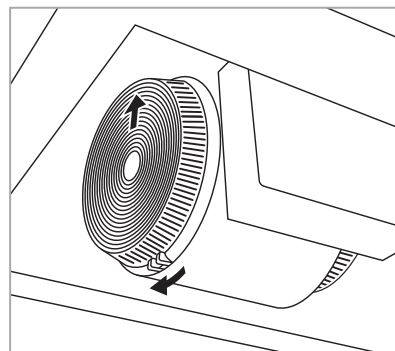
PLFW 129E/J & PLJW 130 (Grease Tray + Handle Baffle Filters):

- ☐ Slide the grease tray into the rear channel until fully seated.
- ☐ Tilt the back edge of the filter into the hood above the grease tray, lower the front into the channel, then pull forward and pull the back down to seat it against the tray.



PLJW 129RK (Recirculating Mode Only):

- ☐ Prior to baffle filter installation, insert flange of charcoal filter into receiver then twist and lock charcoal filters in place directly over the ends of blower motor.



Step 6: Test Operation

- ☐ Plug the hood into a standard 110V outlet.
- ☐ Turn on the blower and cycle through all speeds.
- ☐ Test the lights.
- ☐ Check that:
 - All filters are seated correctly.
 - No unusual noise is present.
 - Duct connections are sealed and free of leaks.

Final Steps

Before tightening everything down, make sure your hood is properly aligned.

Check that your hood is level

Use a level to check two things:

- First, place the level along the front of the hood to ensure it's horizontally level.
- Then, check the front-to-back alignment by placing the level along the side of the hood. If it's slightly off, you may need to use shims or spacers between the hood and the wall to correct the tilt.

Tighten all mounting screws

- Once everything is level, tighten the screws that secure the hood to the bracket.
- For extra support, you can add self-tapping or grabber screws through the mounting bracket into wall studs, or directly through back of hood into framing.

That wraps up your wall range hood installation! Great work!

We are happy to help you with any questions or concerns you may have. Please create a ticket, email us at support@prolinerangehoods.com or call our support line at 801-973-3959 to talk to a live representative.

Maintenance

Your hood is equipped with stainless steel baffle filters and a grease tray, all dishwasher safe and easy to remove for cleaning.

To remove the baffle filters:

To remove the baffle filters for cleaning, reverse the installation process. Be mindful of sharp edges, and avoid bending the filters during removal.

To remove the grease tray (if applicable):

Simply lift the tray upward and slide it out of the grease tunnel channel.

Handle with care. Filters and trays may have sharp edges. Avoid bending or forcing them during removal or cleaning.

Lastest Installation Manual

Stay Up to Date

We're always improving our installation guides to make them clearer and more accurate. Scan the QR code below to access our online installation guide portal, where you'll find the most current instructions for your Proline hood. This ensures you have the latest tips, diagrams, and updates — even if changes were made after your manual was printed.



 **PROLINE**
RANGE HOODS

4375 W 1980 S, Salt Lake City, UT 84104

Call 801-973-3959
support@prolinerangehoods.com
www.prolinerangehoods.com

Our Support team hours are:
Mon-Fri 8:30 am – 5:00 pm MST